



Dalgety Bay Horticultural Society (DBHS) 47th Annual Show

Saturday 10th September 2022

12:30pm – 5:00pm

**Dalgety Bay Community Centre,
Dalgety Parish Church Hall & Kabin**

Refreshments

Entry £1

Children Free

Transform your outdoor space



Visit our **Rosyth** showroom - **KY11 2UU**



Garden Rooms by srj.



Call now on 01383 851951
Email hello@srjwindows.com
Or visit www.srjwindows.com

srjwindows
conservatories. sunrooms. windows. doors.



**Dalgety Bay
Horticultural Society**
A Society Growing Since 1975

DBHS WANTS YOU

***** Join Today *****

www.dbhs.org.uk

- * Monthly Meetings * Newsletter * Seed Discounts *
- * Allotments * Free Tool Hire *
- * Annual Cheese and Wine *
- * Annual Plant Sale * Annual Coach Outing *
- * Annual Show *

Individual Membership costs £5 per annum
(Outside Dalgety Bay add £3 to cover postage
ie individual cost is £8 (household £13) per annum)
Allotments £12 per annum
(Members from Dalgety Bay and Hillend only)

Fill in the form and send it to our Membership Secretary:
Len Hulston, 22 St David's Court, Dalgety Bay, KY11 9SU

DALGETY BAY HORTICULTURAL SOCIETY

I / We would like to be members of DBHS.

Name: _____ Tel: _____

Address: _____

Post Code: _____ Allotment Y/N: _____

Email: _____

DALGETY BAY HORTICULTURAL SOCIETY

Office Bearers

Chairman:	Michael Gourlay	89 Steeple Crescent, Dalgety Bay, KY11 9SZ
Secretary:	Anja Saunders	18 Merkland Crescent, Dalgety Bay, KY11 9XD
Treasurer:	David English	4 Inch Avenue, Aberdour, KY3 0TF

Committee

Membership:	Len Hulston	22 St David's Court, Dalgety Bay, KY11 9SU
Grapevine:	Sharon Greig	10 Ben Alder Place, Kirkcaldy, KY2 5RH
Allotments:	Sandy Sheail; Kevin Melville; Zelda Blyth	
Committee:	Matthew Simpson; Bryan McDowall	

Dear Visitor,

This year, the show is on 10th September 2022, the second Saturday of the month. Horticultural Shows are normally set in stone but sadly we learned that Cowdenbeath Horticultural Society will not be running a show this year and may never run a show ever again. By moving the DBHS Annual Show from the 1st Saturday of the month to the 2nd Saturday of the month, it gives us a chance to coincide with the new Dalgety Bay Farmers Market. Running our Show with the Farmers Market will perhaps increase the footfall to both events and therefore be a benefit to both events.

There is a new trophy this year to be presented in the Nursing and Residential Section. The trophy is from Graeme Brown, Joinery, who sponsors that section.

DBHS will not run their Farmers Market because of the official Farmers Market being run by Dalgety Community Trust. September will be its' 6th month, so it should be well bedded in by then.

Show judging will start at 10:00am and the show itself will open at 12:30pm. The tea-room is being run by the Gala Committee. They have done an absolutely fantastic job over the past few years of the show, so I am sure that this year will be no different.

There will be the Chairman's bottle raffle. Make sure you buy your tickets for the chance to win a nice highland single malt called Dalwhinnie Winter Gold. For you puzzle people, there is a "Cities of Great Britain" Word Search on page 31. There are 47 British cities for you to find, with seven of them duplicated.

The Sub Committee have been busy picking the classes for many of the Sections. The Schools have been busy designing the poster, writing poems, growing sunflowers and growing tatties in barrels. See the results in the Schools Section Hall in the Kabin. The sunflower charts are in Hall 2, the Vegetable Hall, in the church.

This year, as always, we have some new sponsors and advertisers. Fife Council gives a grant to help run the show and the Community Council provides funds by sponsoring the Schools Section, which is open to the two schools in Dalgety Bay. In fact, all our sponsors help greatly by sponsoring a Section or Sections in the Show and all our advertisers too, help provide funds required to run the Show. We could not run the Show without their help. Our sponsors are listed in the Schedule.

If you are not a member of DBHS, have a look at the page before this and consider joining. We have a meeting of interest each month and we organise bulk ordering of seeds, we run a coach trip "by car" to some local place of interest each year. We also have around 50 allotments. Join DBHS today for nothing. Hand the form in at the show office.

Cover by Matthew Simpson DBHS

Michael J Gourlay, Chairman, DBHS

Shapes Tree Surgery

Working at the height of perfection

**Felling, Pruning, Hedges
Topped and Trimmed,
Stump Removal, Planting**

**Turfing, Fencing, Gravel/Chips
Supplied and Laid**

Insured and Experienced



Tel: 01383 824655

Mob: 07717 662183

Email: graham@shapetreesurgery.co.uk

www.shapetreesurgery.co.uk



DBHS Annual Show - Contents

Section	Description	Sponsor	Page
	Membership Form		1
	Contents		4
	DBHS Trophy List		5
1	Members Only – Vegetables	C&V Carmichael Ltd	7
2	Members Only – Flowers	Living High Travel	7
3	Members Only – Pot Plants	O'Neil Joinery	9
4	Members Only – Industrious	Audyan Blinds	9
5	Vegetables	First Scottish Group	11
6	Fruit	Crosbie Matthew, Funerals, D/Bay	13
7	Herbs	REM, Dalgety Bay	13
8	Herbaceous & Annuals	Tony Rosenbaum, Estate Planner	13
9	Roses	Dalgety Bay Foot Clinic	15
10	Carnations	GSM Electrical, Dalgety Bay (New)	15
11	Chrysanthemum	Wee Glasshouse	15
12	Dahlia	L'Art du Vin, Dalgety Bay (New)	17
13	Sweet Peas	Bold as Grass	17
14	Gladioli	Inverkeithing Trophy Centre	17
15	Fuchsia	Alba Embroidery	19
16	Pot Plants	Narvida	19
17	Alpines	TH2 Hairdressing	19
18	Begonia	Williamson Haulage Ltd	21
19	Cacti & Succulents	Joyce McConville	21
20	Bonsai Display	Scottish Bonsai Association	21
21	Floral Art	Jean's Creations	23
22	Floral Displays	PFI Sign Plus	23
23	Homemade Wines & Beers	Hillend Tavern	23
	Other Shows		25
	DBHS Show Directory		27
	List of Sponsors		28-29
	DBHS Veggie Word Search		31
24	Baking & Sweets	Woodlea Stables	33
25	Preserves	Moo-let.com	35
26	Handicrafts (Traditional)	Artful Bear	35
27	Handicrafts (Contemporary)	Artful Bear	37
28	Photography	Rebecca Lee, Photography	37
29	Nursing and Residential	Graeme Brown, Joinery Services	39
30	Novice	McTaggart's, Aberdour	39
31	Green and Recycled	Lovely Trees	39
32	Just for Fun	Robson Forth Ltd	41
33	Young Gardeners	Kingdom Insurance	41
34	Young Photographers	Rebecca Lee Photography	43
35	Local Groups	Printing Services (Scotland) Ltd	43
36	Schools	DB & H Community Council	43
37	Allotments	Bruce Shaw Consultants Ltd	45
38	Blooming Lovely	Blooming Lovely Dalgety Bay	45
39	DBHS Top Tray	Muir Homes Ltd	47
40	DBHS Top Vase	Muir Homes Ltd	49
	Exhibition Rules		52
	Hints for Exhibiting		53
	Entry Form		56

DBHS Annual Show Trophy List

Section	Trophy	Winner 2019
1	Dalgety Quaich	P Brennan
2	DBHS Members Trophy	I & A Rennie
3	Maureen Trotter Memorial Trophy	I Bryson
1 to 3	DBHS Championship Quaich	I & A Rennie
4	Joe Meldrum Trophy	G Shah
5	Prathouse Farm Trophy	S & S Sheail
5	National Vegetable Society Medal	S & S Sheail
6	Millennium Quaich	D & D Baty
7	DBHS Silver Jubilee Quaich	I & A Rennie
8	Rosenbaum Bowl	T Nelson
9	Stewart Rose Bowl	I & A Rennie
10	Carnation Bowl	D & D Baty
11	Wee Glasshouse Bowl	A Davidson
12	Garden Plan It Trophy	G & W Bennet
13	Society Quaich	T Nelson
14	Conway Bowl	D & J Forrester
8 to 14	BAE Systems Trophy	T Nelson
15	New Douglas Boath Trophy	A Stirling
16	Anniversary Cup	AN Weepers
17	MJG Bowl	PJ Gourlay
18	D & J Forrester Trophy	D & J Forrester
19	Pitcairns Trophy	R Arnott
20	DBHS Decanter	W MacDonald
15 to 20	Bruce Shaw Ltd Trophy	D & J Forrester
5 to 20	Printing Services Show Champions Shield	T Nelson
21	DBHS Silver Jubilee Plate	I & C Greig
22	Sign Plus Trophy	G & W Bennet
23	DH Chalmers Trophy	W Dewar
24	New Lambert Trophy	E Bryson
25	Dalgety Bay Sports and Social Club Trophy	G Shah
26	Scothomes Trophy	M Simpson
27	Curtis Motors Trophy	M Mayes
24 to 27	DBHS 2006 Trophy	G Shah
28	Rebecca Lee Photography Trophy	W Cunningham
29	The Broon Trophy (New)	No Entries
30	St David's Quaich	I Hinshelwood
31	Laughlan-Deans Trophy	I Mayes
32	Pat & Pat Bacon Fun Cup	G & W Bennet
33	DBHS Young Gardener's Cup	E Henderson
34	DBHS Young Photographer's Cup	E Henderson
35	PJG Trowel Trophy	Dalgety Bay Rainbows
36	Community Council Schools Cup	Donibristle Primary School
37	DBHS Allotments Cup	R & M Pearson
38	Crosbie Matthew Trophy	T Nelson
39	A & M Sherry DBHS Top Tray	S & S Sheail
40	A & M Sherry DBHS Top Vase	D & D Baty
Sponsor	Sponsors' Choice Trophy	D & J Forrester

- Professional and Affordable
- Interior and Exterior
- Painting & Wallpapering
- Free Estimates
- Very Competitive Rates



***Local, family-run Painting and Decorating Business
With Over 25 Years Experience***

www.forthdecorating.co.uk



Scottish
Decorators
Federation

Email: forthdecorating@virginmedia.com

LIVING HIGH TRAVEL COACH HIRE FIFE

Your local family coach hire business

DAY TRIPS

PRIVATE HIRE

UK & EUROPEAN TOURS

16 – 53 SEATER COACHES FOR HIRE

Book on-line at

www.livinghightravel.com

Contact Ross Macmillan, Tel/Fax: 01383 620500

Email: livinghightravel@hotmail.co.uk

DBHS MEMBERS ONLY SECTIONS

DBHS Championship

**The DBHS Championship Quaich – Most Points in Sections 1 to 3
2019 Trophy Winner – I & A Rennie**

SECTION 1 – VEGETABLES

Sponsored by C&V Carmichael Ltd

(www.cvcarmichael.com)

The Dalgety Quaich – Most Points in Section 1

Class	2019 Trophy Winners – P Brennan	Prize
1.1	1 CABBAGE, on a dish	£1 60p 40p
1.2	3 POTATOES, Coloured, on a dish (extra points awarded for named varieties)	£1 60p 40p
1.3	3 CARROTS, Long, on a dish, tops trimmed to 3"	£1 60p 40p
1.4	3 PARSNIPS, on a dish, tops trimmed to 3"	£1 60p 40p
1.5	3 ONIONS, White, on a dish, from sets	£1 60p 40p
1.6	3 LEEKS, Pot, on a dish	£1 60p 40p
1.7	3 STALKS of RHUBARB, on a dish	£1 60p 40p
1.8	1 LETTUCE, on a dish	£1 60p 40p
1.9	5 PODS of BROAD BEANS, on a dish	£1 60p 40p
1.10	7 PODS of FRENCH BEANS, on a dish	£1 60p 40p
1.11	7 PODS of RUNNER BEANS, on a dish	£1 60p 40p
1.12	5 TOMATOES, not cherry, on a dish, with calyces	£1 60p 40p
1.13	A SOUP POT COLLECTION – a collection of five different vegetables for making soup	£1 60p 40p

SECTION 2 – FLOWERS

Sponsored by Living High Travel

(www.livinghightravel.com)

DBHS Members Trophy – Most Points in Section 2

Class	2019 Trophy Winners – I & A Rennie	Prize
2.1	1 Vase, ROSES, 3 blooms, mixed/otherwise	£1 60p 40p
2.2	1 Vase, DAHLIA, 3 blooms, mixed/otherwise	£1 60p 40p
2.3	1 Vase, CARNATIONS, Perpetual, 3 blooms mixed/otherwise	£1 60p 40p
2.4	1 Vase, CHRYSANTHEMUM, sprays	£1 60p 40p
2.5	1 Vase, SWEET PEAS, 5 stems, mixed/otherwise	£1 60p 40p
2.6	1 Vase, GLADIOLI, 2 spikes	£1 60p 40p
2.7	1 Vase, HERBACEOUS, mixed	£1 60p 40p
2.8	1 Vase, ANNUALS, 5 stems, mixed/otherwise	£1 60p 40p
2.9	1 Vase, ASTERS, 5 blooms	£1 60p 40p
2.10	1 Vase, FRENCH MARIGOLD, 5 blooms	£1 60p 40p
2.11	1 Vase, FLOWERING SHRUB, distinct cultivar, 3 stems	£1 60p 40p
2.12	1 Vase, CUT FLOWERS, mixed, from open border	£1 60p 40p
2.13	6 Blooms, PANSIES on a stand, mixed/otherwise	£1 60p 40p

O'NEIL

JOINERY & CERAMIC TILING

**Kitchens - Windows - Doors
All Types of Flooring
Decking - Ceramic Tiling**

**Supply & Fitting of Complete
Bathrooms**

All Trades Provided

FREE ESTIMATES

**Tel: 01383 823005;
Mob: 07876 595591
Email: doneil381@googlemail.com**

SECTION 3 – POT PLANTS

Sponsored by O'Neil Joinery
(doneil381@googlemail.com)

The Maureen Trotter Memorial Trophy – Most Points in Section 3
2019 Trophy Winners – I Bryson

Class	Prize
3.1 1 FUCHSIA, single, 6" pot max.	£1 60p 40p
3.2 1 FUCHSIA, double, 6" pot max.	£1 60p 40p
3.3 1 Pot Plant, FOLIAGE	£1 60p 40p
3.4 1 Pot Plant, FERN	£1 60p 40p
3.5 1 Pot Plant, PELARGONIUM	£1 60p 40p
3.6 1 Pot Plant, AFRICAN VIOLET	£1 60p 40p
3.7 1 Pot Plant, CACTUS	£1 60p 40p
3.8 1 Pot Plant, SUCCULENT	£1 60p 40p
3.9 1 Pot Plant, ALPINE	£1 60p 40p
3.10 1 Pot Plant, BEGONIA	£1 60p 40p
3.11 1 Pot Plant, ORCHID, named	£1 60p 40p

SECTION 4 – INDUSTRIOUS

Sponsored by Audyan Blinds
(www.audyablinds.co.uk)

The Joe Meldrum Trophy – Most Points in Section 4
2019 Trophy Winner – G Shah

Class	Prize
Baking and Sweets	
4.1 A PLAITED LOAF	£1 60p 40p
4.2 3 Pieces of COCONUT TRAY BAKE	£1 60p 40p
4.3 3 SAVOURY SCONES	£1 60p 40p
4.4 3 FLORENTINES	£1 60p 40p

NB: You are encouraged to use fairtrade products where possible.

Preserves

4.5 1 Jar of JAM (any sort)	£1 60p 40p
4.6 1 Jar of JELLY (any sort)	£1 60p 40p
4.7 1 Jar of MARMALADE (any sort)	£1 60p 40p
4.8 1 Jar of CHUTNEY (any sort)	£1 60p 40p

NB: Please note that use of screw top jars is allowed.

Handicrafts

4.9 A GIFT WRAPPED PRESENT	£1 60p 40p
4.10 A Knitted PAIR of SOCKS	£1 60p 40p
4.11 An Item of PAPER CRAFT	£1 60p 40p

NB: A Best in Section Rosette will be awarded for classes 4.1 to 4.8 and a separate one for classes 4.9 to 4.11.



The Plant Market is a local, independent garden centre based in Dalgety Bay. Whether you're a novice gardener or a naturalist, we're here to help. From Alpines to trees, roses to rhododendrons, we have a great selection to choose from. Our stock is seasonal so there's always something new coming into the Plant Market for you to discover including;

- Bedding plants
- Bulbs
- Birdcare
- Compost
- Fuels
- Fruit Trees
- Trees
- Vegetables

Sustainability is at the heart of everything we do, so we source many plants from Scottish suppliers. We stock a variety of eco-friendly products and are continuing to expand our product range.

Pop along and see us, we will be delighted to help you make the most of your outdoor space.

The Plant Market, South Pargillis, Clockluine Road, Hillend, Dunfermline, Fife, KY11 7HS

T: 01383 410099 **E:** info@theplant-market.co.uk

W: www.theplant-market.co.uk

Follow us on



OPEN SECTIONS

The Printing Services Show Champions Shield

Most 1st Placed in Sections 5 – 20

2019 Trophy Winners – T Nelson

SECTION 5 – VEGETABLES

Sponsored by First Scottish Group

(www.firstscottish.com)

The Prathouse Farm Trophy – Most Points in Section 5

2019 Trophy Winners – S & S Sheail

The NVS Medal for Best Exhibit in Section 5

Class	2019 Medal Winner – S & S Sheail	Prize		
5.1	1 CAULIFLOWER, on a dish	£1	60p	40p
5.2	1 CABBAGE, on a dish	£1	60p	40p
5.3	3 POTATOES, White, on a dish, named	£1	60p	40p
5.4	3 POTATOES, Coloured, on a dish, named	£1	60p	40p
5.5	A SEED TRAY of 3 each of 4 different varieties of POTATO, named	£3	£2	£1
5.6	2 TURNIPS, on a dish, 3" tops	£1	60p	40p
5.7	2 CARROTS, Long, on a dish, 3" tops	£1	60p	40p
5.8	2 CARROTS, Stump, on a dish, 3" tops	£1	60p	40p
5.9	2 BEETROOT, Cylindrical, on a dish, 3" tops	£1	60p	40p
5.10	2 BEETROOT, Globe, on a dish, 3" tops	£1	60p	40p
5.11	2 PARSNIPS, on a dish, 3" tops	£1	60p	40p
5.12	3 ONIONS, WHITE, from Seed, on stands	£1	60p	40p
5.13	3 ONIONS, RED, from Seed, on stands	£1	60p	40p
5.14	3 ONIONS, WHITE, from Sets, on stands	£1	60p	40p
5.15	3 ONIONS, RED, from Sets, on stands	£1	60p	40p
5.16	2 LEEKS, Blanched	£1	60p	40p
5.17	2 LEEKS, Pot, (blanch not to exceed 6")	£1	60p	40p
5.18	5 SHALLOTS, YELLOW, on a dish	£1	60p	40p
5.19	5 SHALLOTS, RED, on a dish	£1	60p	40p
5.20	5 Pods of PEAS, on a dish	£1	60p	40p
5.21	5 Pods of BROAD BEANS, on a dish	£1	60p	40p
5.22	5 Pods of FRENCH BEANS, on a dish	£1	60p	40p
5.23	5 Pods of RUNNER BEANS, on a dish	£1	60p	40p
5.24	1 VEGETABLE MARROW, on a dish	£1	60p	40p
5.25	5 TOMATOES, not cherry, on a dish, with calyxes	£1	60p	40p
5.26	5 TOMATOES, YELLOW, on a dish, with calyxes	£1	60p	40p
5.27	5 TOMATOES, CHERRY, on a dish, with calyxes	£1	60p	40p
5.28	1 CUCUMBER, on a dish	£1	60p	40p
5.29	3 COURGETTES, on a dish	£1	60p	40p
5.30	3 PEPPERS, on a dish	£1	60p	40p
5.31	1 LETTUCE, on a dish	£1	60p	40p
5.32	2 CELERY HEADS, bottom trimmed, on a dish	£1	60p	40p
5.33	3 STALKS of RHUBARB on a dish	£1	60p	40p
5.34	Any Other VEGETABLE – single variety - named	£1	60p	40p

Take Fairy at the Bay

From a Bacon Roll to a Fairy Cake

From a Cup of Coffee to a Cup of Tea

From 10:00am to 4:00pm

This is the place for you to be

and

Cheeky Wee Gift Shop

A wee gem of a shop within the Take Fairy

Ideal for the wee gift that you

didn't know you needed

Find them at:

1 Moray Way North

Dalgety Bay

Fife

KY11 9NH

Phone: 07743 147354

SECTION 6 – FRUIT

Sponsored by Crosbie Matthew, Funeral Directors, Dalgety Bay
(email@crosbiematthew.co.uk)

The Millennium Quaich – Most Points in Section 6

Class	2019 Trophy Winners – D & D Baty	Prize
6.1	4 DESSERT APPLES, on a dish, 1 variety	£1 60p 40p
6.2	4 CULINARY APPLES, on a dish, 1 variety	£1 60p 40p
6.3	3 PEARS, on a dish, 1 variety	£1 60p 40p
6.4	3 PLUMS, on a dish, 1 variety	£1 60p 40p
6.5	1 Bunch of GRAPES	£1 60p 40p
6.6	Any other FRUIT, 1 variety - named	£1 60p 40p

SECTION 7 – HERBS

Sponsored by Regents Estates and Mortgages, Dalgety Bay
(www.regentsestates.co.uk)

The DBHS Silver Jubilee Quaich – Most Points in Section 7

Class	2019 Trophy Winners – I & A Rennie	Prize
7.1	HERBS, in 3 pots less than or equal to 7"	£2 £1 50p
7.2	PARSLEY, in pot less than or equal to 7"	£1 60p 40p
7.3	ROSEMARY, in pot less than or equal to 9"	£1 60p 40p
7.4	3 CULINARY HERBS, as neat bunches, each cultivar in an 8" vase	£1 60p 40p
7.5	1 CULINARY HERB, a neat bunch in an 8" vase	£1 60p 40p

CUT FLOWERS

The BAE Systems (Dalgety Bay) Trophy –
Most Points in Sections 8 to 14
2019 Trophy Winner – T Nelson

SECTION 8 – HERBACEOUS AND ANNUALS

Sponsored by Tony Rosenbaum, Estate Planner
(Email: t.rosenbaum@camltd.uk; Mob: 07742 179735)

The Rosenbaum Bowl (new) – Most Points in Section 8

Class	2019 Trophy Winners – T Nelson	Prize
8.1	1 Vase (12"), Hardy HERBACEOUS, distinct	£1 60p 40p
8.2	1 Vase (12"), Hardy HERBACEOUS, mixed	£1 60p 40p
8.3	1 Vase (12"), ANNUALS, mixed	£1 60p 40p
8.4	1 Vase (8"), ANNUALS, single variety	£1 60p 40p
8.5	1 Vase (8"), ANTIRRHINUM, 5 stems	£1 60p 40p
8.6	1 Vase (8"), ASTER, Annual, 5 blooms	£1 60p 40p
8.7	1 Vase (8"), AFRICAN MARIGOLD, 3 stems	£1 60p 40p
8.8	1 Vase (8"), FRENCH MARIGOLD, 5 stems	£1 60p 40p
8.9	6 Blooms, PANSIES, on a stand, mixed/otherwise	£1 60p 40p
8.10	6 Blooms, VIOLAS, on a stand, mixed/otherwise	£1 60p 40p
8.11	6 Stems, EVERLASTING, mixed/otherwise	£1 60p 40p
8.12	6 Blooms, CALENDULA, mixed/otherwise	£1 60p 40p
8.13	6 Blooms, RUDBECKIA, Annual, mixed/otherwise	£1 60p 40p




The Wee Glasshouse

Holiday Rental, Self Catering Luxury Apartment
Dalgety Bay

THE WEE GLASSHOUSE

For enquiries or bookings :

 07720 444 525

 info@theweeglasshouse.com

 www.theweeglasshouse.com

Find us on  [airbnb](#)



SECTION 9 – ROSES

Sponsored by Dalgety Bay Foot Clinic
The Stewart Rose Bowl – Most Points in Section 9
2019 Trophy Winners – I & A Rennie

Class			Prize
9.1	1 Vase, ROSES, 3 blooms, mixed/otherwise	£1 60p	40p
9.2	1 Vase, ROSES, 5 blooms, mixed/otherwise	£1 60p	40p
9.3	1 ROSE, Specimen for Fragrance	£1 60p	40p
9.4	1 Vase, FLORIBUNDA, 3 stems, mixed/otherwise	£1 60p	40p
9.5	1 ROSE, Specimen, own foliage, 8" vase	£1 60p	40p
9.6	6 Roses on a stand	£1 60p	40p

SECTION 10 – CARNATIONS

Sponsored by GSM Electrical, Dalgety Bay
(www.gsmelectrical.co.uk)
The Carnation Bowl – Most Points in Section 10
2019 Trophy Winner – D & D Baty

Class			Prize
10.1	1 Vase, Border CARNATIONS, 3 blooms	£1 60p	40p
10.2	1 Vase, Border CARNATIONS, 5 blooms mixed/otherwise	£1 60p	40p
10.3	1 Vase, Garden PINKS, 3 stems, mixed/otherwise	£1 60p	40p
10.4	1 Vase, Garden PINKS, 5 stems, mixed/otherwise	£1 60p	40p
10.5	1 Vase, Perpetual CARNATIONS, 1 bloom	£1 60p	40p
10.6	1 Vase, Perpetual CARNATIONS, 3 blooms	£1 60p	40p

SECTION 11 – CHRYSANTHEMUM

Sponsored by The Wee Glasshouse
(www.theweeglasshouse.com)
The Wee Glasshouse Bowl – Most Points in Section 11
2019 Trophy Winner – A Davidson

Class			Prize
11.1	1 Vase, 3 blooms, CHRYSANTHEMUM, Reflex	£1 60p	40p
11.2	1 Vase, 3 blooms, CHRYSANTHEMUM, Incurved or Intermediate	£1 60p	40p
11.3	1 Vase, 3 stems, CHRYSANTHEMUM, Spray, Single Flowered	£1 60p	40p
11.4	1 Vase, 3 stems, CHRYSANTHEMUM, Spray, Double Flowered	£1 60p	40p
11.5	1 Vase, 3 sprays, CHRYSANTHEMUM, Spray, Anemone Flowered	£1 60p	40p
11.6	1 Vase, mixed, CHRYSANTHEMUM	£1 60p	40p

BAY PATCHERS

FANCY LEARNING A NEW HOBBY
OR BRUSHING UP ON YOUR QUILTING SKILLS?

JOIN US AT
DALGETY BAY COMMUNITY CENTRE
EVERY WEDNESDAY EVENING
7pm to 10pm

FOR MORE INFORMATION CONTACT
CHRIS - 01383 821495
or visit our website
www.baypatchers.org.uk

Dalgety Bay Community Woodlands Group (DBCWG)



**Join our award-winning group of volunteers through
Facebook or www.dbcwg.org**

SECTION 12 – DAHLIA

Sponsored by L'Art du Vin, Dalgety Bay

(www.aduv.co.uk)

The Garden Plan-It Trophy – Most Points in Section 12

2019 Trophy Winner – G & W Bennet

Class			Prize
12.1	1 Vase, 1 bloom, Giant Decorative DAHLIA	£1	60p 40p
12.2	1 Vase, 3 blooms, Large Decorative DAHLIA	£1	60p 40p
12.3	1 Vase, 3 blooms, Medium Decorative DAHLIA	£1	60p 40p
12.4	1 Vase, 3 blooms, Small Decorative DAHLIA	£1	60p 40p
12.5	1 Vase, 3 blooms, Miniature Decorative DAHLIA	£1	60p 40p
12.6	1 Vase, 1 bloom, Giant Cactus DAHLIA	£1	60p 40p
12.7	1 Vase, 3 blooms, Large Cactus DAHLIA	£1	60p 40p
12.8	1 Vase, 3 blooms, Medium Cactus DAHLIA	£1	60p 40p
12.9	1 Vase, 3 blooms, Small Cactus DAHLIA	£1	60p 40p
12.10	1 Vase, 3 blooms, Miniature Cactus DAHLIA	£1	60p 40p
12.11	1 Vase, 3 blooms, Small Ball DAHLIA	£1	60p 40p
12.12	1 Vase, 3 blooms, Miniature Ball DAHLIA	£1	60p 40p
12.13	1 Vase, 5 blooms, Pompon DAHLIA	£1	60p 40p
12.14	1 Vase, 3 blooms, Collarette DAHLIA	£1	60p 40p
12.15	1 Vase Mixed DAHLIA	£3	£2 £1

NB: The term Cactus includes Semi-Cactus.

SECTION 13 – SWEET PEAS

Sponsored by Bold as Grass

(www.boldasgrass.co.uk)

The Society Quaich – Most Points in Section 13

Class	2019 Trophy Winners – T Nelson	Prize
13.1	1 Vase, 7 spikes, distinct, SWEET PEAS	£1 60p 40p
13.2	1 Vase, 7 spikes, mixed, SWEET PEAS	£1 60p 40p
13.3	2 Vases, 7 spikes each, distinct, SWEET PEAS	£2 £1 50p
13.4	2 Vases, 7 spikes each, mixed, SWEET PEAS	£2 £1 50p
13.5	Arrangement of SWEET PEAS in a bowl	£1 60p 40p

(the use of oasis is permitted)

SECTION 14 – GLADIOLI

Sponsored by Inverkeithing Trophy Centre

Engravers to Dalgety Bay Horticultural Society (DBHS)

The Conway Bowl (New in 2019) – Most Points in Section 14

2019 Trophy Winner – D & J Forrester

Class		Prize
14.1	1 Vase, 3 spikes, GLADIOLI	£1 60p 40p
14.2	1 Vase, 2 spikes, GLADIOLI	£1 60p 40p
14.3	1 Vase, 1 spike, GLADIOLI	£1 60p 40p
14.4	1 Vase, 2 spikes, miniature, GLADIOLI	£1 60p 40p
14.5	1 Vase, 2 spikes, Primulinus, GLADIOLI	£1 60p 40p
14.6	2 Vases, 3 spikes in each, mixed, GLADIOLI	£2 £1 50p



New4U CHILDREN'S CLOTHING BANK

Get in touch by text: 07761 113176
email: referralsnew4u@hotmail.com
f : [New4Uchildrensclothingbank](#)



We can provide items such as: brand new underwear, preloved tops, trousers, shorts, skirts, dresses, jackets and shoes (depending on our stock)

For children from 12 months to 18 years.

Please provide us with:
age/size of clothing worn/gender of child

FREE & DISCREET SERVICE - DELIVERED TO YOU

POT PLANTS

The Bruce Shaw Ltd Trophy – Most Points in Sections 15 to 20
2019 Trophy Winner – D & J Forrester

SECTION 15 – FUCHSIA

Sponsored by Alba Embroidery
(www.albaembroidery.co.uk)

The New Douglas Boath Memorial Trophy – Most Points in Section 15

Class	2019 Trophy Winner – A Stirling	Prize
15.1	1 Pot FUCHSIA, single cultivar, 4" max.	£1 60p 40p
15.2	1 Pot FUCHSIA, any cultivar, 3½" max.	£1 60p 40p
15.3	2 Pots FUCHSIA, any cultivar, matched pair, 4" max.	£1 60p 40p
15.4	1 Pot FUCHSIA, single/semi-double cultivar, 6" max.	£1 60p 40p
15.5	1 Pot FUCHSIA, double cultivar, 6" max.	£1 60p 40p
15.6	1 Pot FUCHSIA, Ornamental Foliage, 6" max.	£1 60p 40p
15.7	1 Pot FUCHSIA, Triphylla, 8" max.	£1 60p 40p
15.8	1 Pot FUCHSIA, Species, any size pot	£1 60p 40p
15.9	1 FUCHSIA, Standard, any size pot	£1 60p 40p
15.10	6 FUCHSIA blooms, on a board, min. 3 varieties	£1 60p 40p

SECTION 16 – POT PLANTS

Sponsored by Narvida
(www.narvida.co.uk)

The Anniversary Cup – Most Points in Section 16

Class	2019 Trophy Winner – AN Weepers	Prize
16.1	1 Pot Plant, FOLIAGE	£1 60p 40p
16.2	1 Pot Plant, in FLOWER	£1 60p 40p
16.3	1 Pot Plant, FERN	£1 60p 40p
16.4	1 Pot Plant, COLEUS	£1 60p 40p
16.5	1 Pot Plant, PELARGONIUM	£1 60p 40p
16.6	1 Pot Plant, GLOXINIA	£1 60p 40p
16.7	1 Pot Plant, EXOTIC, named	£1 60p 40p

SECTION 17 – ALPINES

Sponsored by TH2 Hairdressing, Dalgety Bay
(Tel: 01383 821270)

The MJG Bowl – Most Points in Section 17

Class	2019 Trophy Winner – PJ Gourlay	Prize
17.1	3 Hardy ALPINES, distinct species in pots/ pans	£3 £2 £1
17.2	1 Hardy ALPINE in a pot or pan	£1 60p 40p
17.3	1 Group of ALPINES, grown in a container no greater than 12" (30cm) square	£1 60p 40p
17.4	3 Cushion ALPINES in a single pot or pan	£1 60p 40p

Russell's Landscapes

Ground and Building Works

DALGETY BAY / ALL TRADES SUPPLIED

All aspects of landscaping

- * Mono Block Driveways * Slabbing *
- * Artificial Grass and Turfing *
- * Fencing * Decking * Brick and Stonework *
- * Stump Removal *
- * Garage and Shed Re-felting *
- * Ground Maintenance * Drainage *
- * Power Washing Service *
- * Mono Block Re-sanding *
- * Decking Re-oiled / Stained *

Phone Mob: 07984 253013

Find us on Facebook

SECTION 18 – BEGONIA

Sponsored by Williamson Haulage Ltd, Cowdenbeath
(info@williamsonhaulage.com)

The D & J Forrester Trophy – Most Points in Section 19

Class	2019 Trophy Winner – D & J Forrester	Prize		
18.1	1 Pot BEGONIA Multi Stem	£1	60p	40p
18.2	1 Pot BEGONIA Single Stem	£1	60p	40p
18.3	1 Pot BEGONIA Pendulus Type (non Sutherlandii)	£1	60p	40p
18.4	1 Pot BEGONIA Rex	£1	60p	40p
18.5	1 Pot BEGONIA Sutherlandii	£1	60p	40p
18.6	1 Pot BEGONIA Benichoma	£1	60p	40p
18.7	2 BEGONIA Blooms on a Board	£1	60p	40p
18.8	1 Pot BEGONIA Non Stop	£1	60p	40p

SECTION 19 – CACTI AND SUCCULENTS

Sponsored by Joyce McConville

The Pitcairns Trophy – Most Points in Section 18

Class	2019 Trophy Winner – R Arnott	Prize		
19.1	6 CACTI / SUCCULENTS from 6 different groups	£3	£2	£1
19.2	3 CACTI from a named group	£1	60p	40p
19.3	3 SUCCULENTS from a named group	£1	60p	40p
19.4	3 CACTI in pots not exceeding 4"	£1	60p	40p
19.5	3 SUCCULENTS in pots not exceeding 4"	£1	60p	40p
19.6	1 CACTUS	£1	60p	40p
19.7	1 SUCCULENT (non-cactus)	£1	60p	40p
19.8	Display of CACTI and/or SUCCULENTS grown in an Unusual Container	£1	60p	40p
19.9	An example of a CACTUS or SUCCULENT from a BEGINNER	£1	60p	40p

SECTION 20 – BONSAI DISPLAY

Sponsored by The Scottish Bonsai Association
(www.scottishbonsai.org)

The DBHS Decanter – Most Points in Section 20

Class	2019 Trophy Winner – W MacDonald	Prize		
20.1	1 MINIATURE LANDSCAPE	£1	60p	40p
20.2	1 CONIFER	£1	60p	40p
20.3	1 GROUP PLANTING	£1	60p	40p
20.4	1 BROAD LEAF/DECIDUOUS	£1	60p	40p
20.5	1 EVERGREEN	£1	60p	40p
20.6	1 MAME Display (Up to 8" tall from top of pot)	£1	60p	40p
20.7	1 Cascading BONSAI	£1	60p	40p
20.8	1 Root over Rock BONSAI	£1	60p	40p
20.9	An Example of BONSAI, from a BEGINNER	£1	60p	40p

Have You Seen What's On at



Where Tradition Suits the Community

Real Ales, Beer Garden

Live Sky Sports

Live Music & Karaoke Nights

Quiz Nights (1st Tuesday of Month)

Well behaved Dogs Welcome

Open 7 days

Main Street

Mon-Thurs: 4pm – midnight

Hillend

Fri: 3pm – midnight

KY11 9ND

Sat/Sun: 1pm – midnight

(t) 01383 415391



SECTION 21 – FLORAL ART

Sponsored by Jean's Creations

(www.jeans-creations.co.uk)

The DBHS Silver Jubilee Plate – Most Points in Section 21

2019 Trophy Winner – I & C Greig

Class		Prize
21.1	A Display to Represent "THE JUBILEE" max size 24" X 24" (60cm X 60cm)	£5 £3 £2

Subject for Class 21.1 chosen by sponsor.

NB: Exhibit need not be created on the show premises.

SECTION 22 – FLORAL DISPLAYS

Sponsored by PFI Sign Plus

(www.signplus.co.uk)

Sign Plus Trophy – Most Points in Section 22

2019 Trophy Winner – G & W Bennet

Class		Prize
22.1	BASKET of ROSES or DAHLIA	£1 60p 40p
22.2	FLORAL TABLE DECORATION	£1 60p 40p
22.3	ARRANGEMENT in a 250ml Wine Glass	£1 60p 40p
22.4	FUCHSIA HEADS Floating in a Bowl of Water	£1 60p 40p
22.5	DRIED FLOWER Arrangement	£1 60p 40p
22.6	SPRAY for a Lady	£1 60p 40p
22.7	BUTTON HOLE for a Gentleman	£1 60p 40p

SECTION 23 – HOMEMADE WINES AND BEERS

Sponsored by The Hillend Tavern

(www.hillendtavern.co.uk)

The D H Chalmers Trophy – Most Points in Section 23

2019 Trophy Winner – W Dewar

Class		Prize
23.1	1 Bottle WINE, Red, Sweet	£1 60p 40p
23.2	1 Bottle WINE, Red, Dry	£1 60p 40p
23.3	1 Bottle WINE, White, Sweet	£1 60p 40p
23.4	1 Bottle WINE, White, Dry	£1 60p 40p
23.5	1 Bottle BEER	£1 60p 40p
23.6	1 Bottle LAGER	£1 60p 40p
23.7	1 Bottle STOUT	£1 60p 40p
23.8	1 Bottle CIDER	£1 60p 40p
23.9	1 Bottle GINGER BEER	£1 60p 40p

FIFE FLOWER SHOW

on

**Saturday 17th September 2022
from 11:00am to 5:00pm**

and

**Sunday 18th September 2022
from 11:00am to 4:30pm**

**(Prize Ceremony at 4:30pm
on Sunday 18th September 2022)**

**Held at
Leven Parish Church Hall
Durie Street, Leven, Fife, KY8 4HA**

Admission by Donation

For more information and Show Schedules contact:

Alistair Barnard 07809 219579

or

Rosslyn Scott 01592 759582

Other Shows

Society	Show Date
Auchtermuchty Flower Show, (confined to district), at Auchtermuchty Church Hall. Contact: June Forbes, Tel: 01337 828617	3 rd September 2022
Colinsburgh & Kilconquhar Horticultural Society at the Town Hall, Colinsburgh. Contact: Ken Weir, Tel: 01333 340642	13 th August 2022
Cupar & District Floral & Horticultural Society at the Corn Exchange, Cupar. Contact: Wanda Wheelans, Tel: 01334 654648	20 th August 2022
Fife Flower Show at Leven Parish Church, Durie Street, Leven, KY8 4HA - see page 24 for detail. Contact: Alistair Barnard, Tel: 07809 219579 or Rosslyn Scott, Tel: 01592 759582	17 th /18 th September 2022
Fossoway & District Horticultural Society at the Village Hall, Crook of Devon. George Harley, Tel: 01577 840752	20 th August 2022
Largo & Newburn Horticultural Society at the Simpson Institute, Upper Largo. Contact: Joyce Cummings, Tel: 01333 360820 Check date details with contact.	26 th /27 th August 2022
Letham & District Horticultural Society at Letham Village Hall. Contact: Geoff McDonald, Tel: 01337 810250	13 th August 2022
Leuchars & District Gardening and Crafts Club at Burnside Hall, Balmullo. Contact: Bill Duff, Tel: 01334 870787	13 th August 2022 29 th October 2022
Leven & District Gardens & Allotments Association at The Centre, Commercial Road, Leven. Contact: Elizabeth McGuire, Tel: 01333 423551	27 th /28 th August 2022
Limekilns, Charlestown, Pattiesmuir and Crombie Horticultural Society at the Queen's Hall, Charlestown. Contact: Eithne Griffiths, Tel: 01383 872937	27 th August 2022
Newburgh & District Gardening Society at the Tayside Institute, High Street, Newburgh. Contact: Merial Clark. Tel: 01337 840809	20 th August 2022
North Queensferry Heritage Trust Village Show (confined to district) at North Queensferry Community Centre. Contact: Lin Collis, Tel: 01383 412712	27 th August 2022
Pitlessie Flower Show (confined to district) at the Wilkie Hall, Pitlessie. Contact: Val Garland, Tel: 01337 830611	20 th August 2022
Scone Palace Garden Fair in the Gardens at Scone Palace Contact: heather@scone-palace.co.uk	3 rd /4 th June 2022

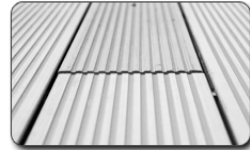
FORTH

Decking & Fencing



Here at Forth Decking & Fencing we specialise in building decks of all types and sizes. Whether you are thinking about a large elevated multi-story deck for entertaining or a small intimate space for relaxing you will find that Forth Decking & Fencing has a solution for you.

We offer a full design and installation package, in which every deck is designed and custom-made by our craftsmen and tailored completely to your unique requirements.



All our work is very attentive to detail and precision, and all Materials used are of a high grade. Call, Email or go to our

'Enquiries' page today for a **FREE** quote and

Prepare to be pleased!

Mobile: 07745 582005

www.forthdecking.co.uk

Lorna's Flowers est. 1993

All your floral needs,

1 Main Street West, Hillend, by Dalgety Bay

Weddings,

Bouquets, Water boxes, Baskets, Fruit baskets, Teddies,

Funeral displays, including grave needs eg. flower cones

Wrapping service.

Wedding Hire from £1

Candelabra

Vases in various sizes and shapes,

Mirror tiles,

Wedding cake stands, from two tiers,

Pedestals,

Silk flower arrangements

and more just ask.

Free wedding consultation

ALL MAJOR CREDIT / DEBIT

CARDS ACCEPTED



Tel: 01383 410055

Mob: 07773 811609

DBHS

Show Directory

This is an addition to our Show Schedule, which will hopefully help you to find what you are looking for in the five halls where the DBHS Annual Show takes place.

Hall 1 - Community Centre

Floral Sections

- 2 - DBHS Members Only Flowers
- 3 - DBHS Members Only Pot Plants
- 8 - Herbaceous and Annuals
- 9 - Roses
- 10 - Carnations
- 11 - Chrysanthemum
- 12 - Dahlia
- 13 - Sweet Peas
- 14 - Gladioli
- 15 - Fuchsia
- 16 - Pot Plants
- 17 - Alpines
- 18 - Begonia
- 21 - Floral Art
- 22 - Floral Displays
- 38 - Blooming Lovely
- 40 - DBHS Top Vase
- Trophy Table
- Show Office

Hall 2 - Church Hall A

Vegetable and Fruit Sections

- 1 - DBHS Members Only Vegetables
- 5 - Vegetables
- 6 - Fruit
- 7 - Herbs
- 39 - DBHS Top Tray
- Schools Sunflower Charts

The Tombola and Raffle table is located in the Farmers Market

Hall 2 - Church Hall A - Others

- 4 - DBHS Members Only Industrious(Baking)
- 4 - DBHS members Only Industrious (Preserves)
- 19 - Cacti & Succulents
- 20 - Bonsai Display
- 23 - Homemade Wines and Beers
- 24 - Baking and Sweets
- 25 - Preserves
- 28 - Photography
- 30 - Novice
- 32 - Just for Fun
- 37 – Allotments

Hall 3 - Church Hall B

Industrious Sections

- 4 - DBHS Members Only Industrious (Non Baking)
- 26 - Handicrafts (Traditional)
- 27 - Handicrafts (Contemporary)
- 29 - Nursing & Residential
- 31 - Green and Recycled

Hall 4 - Church Hall C

Young Gardeners/Local Groups

- 33 - Young Gardeners
- 34 - Young Photographers
- 35 - Local Groups

Hall 5 - Kabin

Schools Section

- 36 - Schools

The Presentation of Trophies will take place in the Community Centre at 4:00pm

DBHS Annual Show
Alphabetic List of Sponsors

Alba Embroidery

Unit 83, East Way, Hillend Ind Park, Dalgety Bay, Fife, KY11 9JF
Tel: 07872 986440; www.albaembroidery.co.uk

The Artful Bear

Vivienne McBride
Mob: 07710 512998; Email: info@theartfulbear.co.uk

Audyan Blinds

Unit 75, East Way, Hillend Ind Park, Dalgety Bay, Fife, KY11 9JE
Tel: 01383 829898; Mob: 07789 792373; Email: info@audyanblinds.co.uk

Blooming Lovely, Dalgety Bay

Peter Collins, 1 Craigridge Place, Dalgety Bay, Fife, KY11 9NE
Mob: 07833 455379; www.bloominglovely.org.uk

Bold as Grass

Tel: 01383 252010; Email: scott@boldasgrass.co.uk;
www.boldasgrass.co.uk

Graeme Brown, Joinery Services

1 Forth Court, Dalgety Bay, Fife, KY11 9SF
Tel: 01383 825361; Mob: 07899 074889; Email: brown-g3@sky.com

Bruce Shaw, Property Consultants Ltd

9 Seafield Place, Dalgety Bay, Fife, KY11 9YW
Tel: 01383 824450; Mobile: 07900 913975; www.bruce-shaw.co.uk

C & V Carmichael Ltd, Blacksmiths

Mossmorran, Cowdenbeath, Fife, KY4 8EP
Tel: 01383 510469

Crosbie Matthew Funeral Directors

Moray Way North, Dalgety Bay, Fife, KY11 9NH
Tel: 01383 822121; Email: email@crosbiematthew.co.uk

Dalgety Bay Foot Clinic

18 Inchmickery Road, Dalgety Bay, Fife, KY11 9NL
Tel: 01383 822278; Mob: 07708 784276

Dalgety Bay and Hillend Community Council

Contact: Community Council Secretary
Email: secretarydbhcc@gmail.com

Fife Council

Fife House, North Street, Glenrothes, Fife, KY6 5LT
www.fife.gov.uk

First Scottish Group

St David's House, St David's Drive, Dalgety Bay, Fife, KY11 9NB
Tel: 01383 826777; www.firstscottish.com

Hillend Tavern

37 – 39 Main Street, Hillend, Fife, KY11 9ND
Tel: 01383 415391

GSM Electrical

Unit 9, Merlin Way, Dalgety Bay, Fife, KY11 9JY
Tel: 01383 821273; gsmelectrical.co.uk

Inverkeithing Trophy Centre

29 Church Street, Inverkeithing, Fife, KY11 1LG
Tel: 01383 411348

Jean's Creations

Jean Boath, Tel: 01383 823641
www.jeans-creations.co.uk

Kingdom Insurance

25 Hope Street, Inverkeithing, Fife, KY11 1LN
Tel: 01383 413377; Mob: 07468 528400; Email: broker@kingdominsurance.co.uk

**DBHS Annual Show
Alphabetic List of Sponsors
(continued)**

Rebecca Lee, Photography

Rebecca Lee, Tel: 01383 822848; Mob: 07833 965221
Email: hello@rebeccaleephotoaphy.co.uk

L'Art du Vin

18 Taxi Way, Dalgety Bay, Fife, KY11 9JT
Phone: 01383 821212; www.aduv.co.uk

Living High Travel

Ross McMillan, 12 Fieldfare View, Dunfermline, Fife, KY11 8FY
Tel: 01383 620500; www.livinghightravel.com

Lovely Trees

Peter Collins, 1 Craigridge Place, Dalgety Bay, Fife, KY11 9NE
Mob: 07833 455379; Email: peter@lovelytrees.co.uk

McTaggarts Café/Deli, Aberdour

21 High Street, Aberdour, Fife, KY3 0SH
Tel: 01383 860820; www.facebook.com/mctaggarts

Moo-Let.com

Michael Annandale, Suite 4, Preston House, 7 Preston Crescent, Inverkeithing, Fife, KY11 1DR. Tel: 01383 822981; Email: michael@moo-let.com

Muir Homes Ltd

Muir House, Belleknowes Ind Estate, Inverkeithing, Fife, KY11 1HY
Tel: 01383 416191; www.muirhomes.co.uk

Narvida Ltd, Steel Fabricators and Erectors

Taxi Way, Hillend Industrial Park, Dalgety Bay, Fife, KY11 9JT
Tel: 01383 823417; www.narvida.co.uk

O'Neil, Joinery & Ceramic Tiling

Derek O'Neil
Tel: 01383 823005; Mob: 07876 595591; Email: doneil381@googlemail.com

Printing Services (Fife) Ltd

11 Broomhead Drive, Dunfermline, Fife, KY12 9DT
Tel: 01383 620919; www.printingservicesfife.com

Regents Estates and Mortgages, Dalgety Bay

6 Moray Way North, Dalgety Bay, Fife, KY11 9NH
Tel: 01383 822555; Email: admin@regentsestates.co.uk

Robson Forth, Chartered Accountants

3 St Davids Business Park, Dalgety Bay, Fife, KY11 9PF
Tel: 01383 825410; www.robsonforth.co.uk

Tony Rosenbaum Dip FA, Estate Planner

Mob: 07742 179735
Email: t.rosenbaum@camltd.uk

Scottish Bonsai Association

Contact: Chairman, SBA
chairman@scottishbonsai.org

PFI Sign Plus Ltd

Bristol House, 15 Ridge Way, Hillend Ind Park, Dalgety Bay, Fife, KY11 9JH
Tel: 01383 823000; Email: info@signplus.co.uk

TH2 Hairdressing, Dalgety Bay

Hairdresser to The Chairman
Tel: 01383 821270

Wee Glasshouse

Lumsdaine Drive, Dalgety Bay, Fife, KY11 9YU
Mob: 07720 444525; Email: info@theweeglasshouse.com

Williamson Haulage Ltd, Cowdenbeath

Woodend Industrial Estate, Cowdenbeath, Fife, KY4 8HW
Tel: 01383 518246; www.williamsonhaulage.com

Dalgety Parish Church



We all need strong roots to grow our faith

Join us for Morning Worship, which is livestreamed, at 10:30am each Sunday. On the second Sunday of each month, we have an all-age service at 4:00pm. This is interactive and very informal.

Come along - you will be made very welcome

Coffee is served after the 10:30am service

Check out the DPC Facebook page and website for what is happening.

We have quite a few groups who have re-started.

Minister: Rev. Christine Sime: 01383 822316

csime@churchofscotland.org.uk

Assistant Minister: Andrea Fraser

andrea.fraser@churchofscotland.org.uk

Church Office: Open weekdays 9.30am - 12 noon

01383 824092

Web: www.dalgety-church.org.uk

If you need **space** to stop, think or meditate, our Quiet Room is open every weekday 9am - 6pm

Access door is the first door on the left side of the building
(as you face it from the car park)

Dalgety Parish Church of Scotland

Registered in Scotland as a Charity, No: SC020926

DBHS
Annual Show
Word Search

A	E	D	I	N	B	U	R	G	H	E	R	E	F	O	R	D	B	C	P	D	C
E	Q	U	A	M	H	P	D	G	U	H	K	O	U	Z	W	L	I	K	E	A	J
N	T	N	H	G	R	D	N	A	L	R	E	D	N	U	S	E	Y	V	R	W	P
S	F	D	B	C	E	Z	O	B	L	R	T	F	Y	K	E	I	L	D	T	O	L
I	N	E	G	T	A	U	B	S	L	O	N	D	O	N	M	F	I	L	H	X	Y
P	R	E	S	T	O	N	A	P	E	Q	M	S	E	D	X	F	N	I	S	O	M
W	Z	E	W	L	F	E	T	B	A	N	G	O	R	K	F	E	A	N	J	C	O
B	H	X	A	Y	V	W	H	X	E	W	T	J	Q	L	L	H	P	C	U	R	U
C	C	E	N	I	F	C	A	M	B	R	I	D	G	E	V	S	D	O	E	C	T
G	I	T	S	H	Q	A	B	V	I	R	D	P	W	K	Z	X	H	L	J	G	H
T	W	E	E	U	G	S	R	S	U	N	D	E	R	L	A	N	D	N	M	L	L
C	R	R	A	B	L	T	A	H	G	E	J	A	E	L	Y	O	U	H	T	A	B
L	O	Q	K	D	O	L	D	E	S	C	O	M	H	C	I	W	R	O	N	S	N
P	N	F	E	D	U	E	F	F	N	A	Y	W	C	F	S	A	H	C	L	G	H
T	B	R	X	S	C	V	O	F	U	N	E	E	D	R	E	B	A	I	E	O	R
E	B	G	D	S	E	B	R	I	S	T	O	L	M	K	H	S	M	E	I	W	Z
Y	O	N	Q	E	S	J	D	E	I	E	C	H	E	S	T	E	R	L	C	P	L
C	O	V	E	N	T	R	Y	L	Y	R	X	K	T	E	A	U	W	Y	E	V	Z
M	D	R	I	R	E	N	L	D	M	B	C	S	R	H	C	B	B	J	S	E	B
A	L	I	V	E	R	P	O	O	L	U	T	G	U	F	H	R	S	R	T	W	R
H	O	D	X	V	Q	Y	P	C	A	R	L	I	S	L	E	A	V	Z	E	A	I
G	L	Q	U	N	P	E	N	G	M	Y	L	F	C	D	L	O	S	B	R	K	G
N	O	T	T	I	N	G	H	A	M	T	H	T	W	I	M	V	J	S	X	E	H
I	R	A	Z	K	H	G	N	I	L	R	I	T	S	D	S	Y	B	P	K	C	T
M	A	N	C	H	E	S	T	E	R	T	C	B	O	G	F	D	R	O	F	X	O
R	I	M	F	V	K	N	U	B	W	I	U	S	J	O	O	R	T	D	Q	L	N
I	R	C	A	N	T	E	R	B	U	R	Y	V	Q	N	R	S	A	M	G	B	F
B	E	X	H	S	Z	A	P	C	Y	U	X	L	E	E	D	S	Z	W	E	Y	J

This is the 47th Dalgety Bay Horticultural Society (DBHS) Annual Show. In the grid above are hidden 47 cities of Great Britain. Your challenge is to list, alphabetically, all 47 and note which seven are in the grid twice.

Write your list on a separate piece of paper and print your name, and telephone number in the space provided below and send it all to Michael Gourlay, 89 Steeple Crescent, Dalgety Bay, Fife, KY11 9SZ by Friday 16th September 2022. Alternatively, hand it in to the office. You may win a prize.

Name: **Tel No:**

DALGETY BAY FOOT CLINIC

Helen Todd BSc (Hons), Pod.Med., MChS
State Registered
Chiropodist / Podiatrist
Telephone: 01383 822278
Mobile: 07708 784276



**Common foot complaints
explained in plain language**

INDUSTRIOUS SECTIONS

The DBHS 2006 Trophy – Most Points in Sections 24 to 27
2019 Trophy Winner – G Shah

SECTION 24 – BAKING and SWEETS

Sponsored by Woodlea Stables
(www.woodleastables.co.uk)

The New Lambert Trophy – Most Points in Section 24
2019 Trophy Winner – E Bryson

Class		Prize
24.1	3 CHEESE SCONES	£1 60p 40p
24.2	1 COFFEE AND WALNUT CAKE (Min 7")	£1 60p 40p
24.3	1 DATE LOAF	£1 60p 40p
24.4	3 CHOCOLATE ECLAIRS	£1 60p 40p
24.5	3 SESAME ROLLS	£1 60p 40p
24.6	3 INDIVIDUAL MERIGUES	£1 60p 40p
24.7	A DECORATED GINGERBREAD FAMILY OF FOUR	£1 60p 40p
24.8	3 CHEDDAR AND LAVENDER SCONES (see Recipe below)	£1 60p 40p

NB: You are encouraged to use fair trade products where possible.

The Recipe 3 Cheddar & Lavender Scones

Ingredients:

80g self-raising white flour	150g Cheddar, grated
100g self-raising wholemeal flour	175ml full fat milk
65g malted bread flour	1 egg, beaten, for brushing
Pinch of salt	Plain flour for dusting
1 tbsp finely chopped lavender	

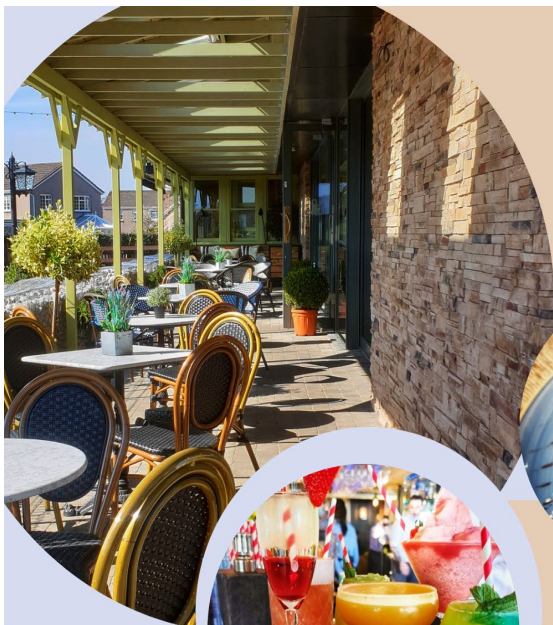
Method:

Heat the oven to 220c. Mix the flours together in a bowl. Mix in the salt, lavender and 100g of the grated cheese. Add most of the milk and mix until evenly combined. Slowly add enough of the remaining milk to form a soft paste.

Tip the mixture onto a lightly floured work surface and lightly fold it together to form soft dough.

Gently roll the dough with a rolling pin or flatten with your hands to a rough circle. Cut out 6 rounds using an 8cm plain cutter.

Brush the tops of the scones with beaten egg and sprinkle with the remaining cheese. Transfer them to a baking tray. Bake for 15 to 20 minutes until risen and golden brown.



LÓUIE BROWNS

**BAR
KITCHEN
PRIVATE DINING
EVENTS
TERRACE**

CONTACT US

01383 821115
info@louiebrowns.co.uk
www.louiebrowns.co.uk

BOOK NOW

SECTION 25 – PRESERVES

Sponsored by Moo-let.com, Dalgety Bay
(info@moo-let.com)

**Dalgety Bay Sports & Social Club Trophy –
Most Points in Section 25
2019 Trophy Winner – G Shah**

Class			Prize
25.1	1 Jar of TOMATO JELLY	£1	60p 40p
25.2	1 Jar of STRAWBERRY JAM	£1	60p 40p
25.3	1 Jar of RASPBERRY JAM	£1	60p 40p
25.4	1 Jar of BLACKCURRANT JAM	£1	60p 40p
25.5	1 Jar of MARMALADE (any sort)	£1	60p 40p
25.6	1 Jar of GOOSEBERRY JAM	£1	60p 40p
25.7	1 Jar of TOMATO SAUCE	£1	60p 40p
25.8	1 Jar of PICKLE (any sort)	£1	60p 40p
25.9	1 Jar of CHUTNEY (any sort)	£1	60p 40p
25.10	1 Jar of ANY OTHER PRESERVE - named	£1	60p 40p

NB: Please note that use of screw top jars is allowed.

NB: You are encouraged to use fair trade products where possible.

SECTION 26 – HANDICRAFTS (Traditional)

Sponsored by The Artful Bear
(www.theartfulbear.co.uk)

**The Scothomes Trophy – Most Points in Section 26
2019 Trophy Winner – M Simpson**

Traditional: Articles from a known design, pattern or method presented in a traditional manner.

Class			Prize
KNITTING/CROCHET			
26.1	An item of CROCHET	£1	60p 40p
26.2	A KNITTED item	£1	60p 40p
EMBROIDERY			
26.3	An EMBROIDERY item using decorative stitches	£1	60p 40p
26.4	An item of CROSS STITCH	£1	60p 40p
26.5	An item of TAPESTRY	£1	60p 40p
PATCHWORK/QUILTING			
26.6	A PATCHWORK item	£1	60p 40p
26.7	A QUILTED item	£1	60p 40p
MISCELLANEOUS			
26.8	An EASTER item	£1	60p 40p

**NB: Exhibits entered in Section 26 must not have been
entered in a previous DBHS show.**

DALGETY COMMUNITY TRUST

DEDICATED TO MAKING POSITIVE
CHANGES FOR EVERYONE IN OUR
COMMUNITY

FOLLOW US ON FACEBOOK AND BECOME A
MEMBER AT
WWW.DALGETYCOMMUNITYTRUST.CO.UK



McRae's Garden Services

- Ground Works & Drainage
- Landscaping
- Fencing
- Tree Work
- Paving
- Turfing



Gordon McRae:

McRae's Garden Services

Tel: 01383 825252; Mob: 07792 329859

mcraesgardenservices@gmail.com

SECTION 27 – HANDICRAFTS (Contemporary)

Sponsored by The Artful Bear

(www.theartfulbear.co.uk)

The Curtis Motors Trophy – Most Points in Section 27

2019 Trophy Winner – M Mayes

Contemporary: Articles from ideas derived from a traditional way but given a new approach using a combination of techniques, methods and fabrics in a different manner.

Class		Prize
27.1	An item made from FIMO	£1 60p 40p
27.2	Six HANDMADE BUTTONS	£1 60p 40p
27.3	A SCISSOR KEEPER	£1 60p 40p
27.4	A PICTURE made with BEER BOTTLE TOPS (in any medium except photography)	£1 60p 40p
27.5	A BRACELET of BEADS	£1 60p 40p
27.6	A LARIAT NECKLACE	£1 60p 40p
27.7	A DECORATIVE HAIR ACCESSORY	£1 60p 40p
27.8	3 KNITTED FLOWERS	£1 60p 40p

SECTION 28 – PHOTOGRAPHY

Sponsored by Rebecca Lee Photography

(www.rebeccaleephoto.com)

The Rebecca Lee Photography Trophy

– Most Points in Section 28

2019 Trophy Winner – W Cunningham



Class		Prize
28.1	1 Mounted PHOTOGRAPH of TREES	£1 60p 40p
28.2	1 Mounted PHOTOGRAPH entitled "FLOWER OR PLANT"	£1 60p 40p
28.3	1 Mounted PHOTOGRAPH entitled "ALL YOU NEED IS LOVE"	£1 60p 40p
28.4	1 Mounted BLACK AND WHITE Study entitled "A MOMENT IN TIME"	£1 60p 40p
28.5	1 Mounted PHOTOGRAPH entitled "FAR FAR AWAY"	£1 60p 40p

NB: The maximum size of entries to Section 28 will be restricted to 300mm x 250mm or 12" x 10", including the mount.

Subjects for Section 28 chosen by sponsor.

Graeme Brown **Joinery Services**

**All Joinery Work Undertaken
Free Estimates**

Tel: 01383 825361

Mob: 07899 074889

SECTION 29 – NURSING AND RESIDENTIAL

Sponsored by Graeme Brown, Joinery Services
(brown-g3@sky.com)

The Broon Trophy (New) – Most points in Section 29

Class		Prize		
29.1	A DECORATED JAM JAR	£1	60p	40p
29.2	A BRIGHTLY COLOURED PAIR of POM POMS	£1	60p	40p
29.3	A JUBILEE CARD for the QUEEN	£1	60p	40p
29.4	Any other HANDICRAFT item	£1	60p	40p

SECTION 30 – NOVICE

Sponsored by McTaggart's Café/Deli, Aberdour
(www.facebook.com/mctaggarts)

St David's Quaich – Most Points in Section 30

Class	2019 Trophy Winner – I Hinshelwood	Prize		
30.1	4 POTATOES, any colour, named, on a dish	£1	60p	40p
30.2	7 Pods of FRENCH BEANS, in a dish	£1	60p	40p
30.3	5 Pods of BROAD BEANS, on a dish	£1	60p	40p
30.4	1 LETTUCE, on a dish	£1	60p	40p
30.5	1 Vase, ANNUALS, mixed	£1	60p	40p
30.6	3 of Any Single Variety of FRUIT, on a plate	£1	60p	40p
30.7	LAVENDER in a pot less than or equal to 6"	£1	60p	40p
30.8	1 Pot Plant, FOLIAGE	£1	60p	40p

NB: Exhibitors in the Novice Section must never have won an individual trophy in any Section, excluding Young Gardeners and Young Photographers in any DBHS Show.

SECTION 31 – GREEN AND RECYCLED

Sponsored by Lovely Trees
(peter@lovelytrees.co.uk)

The Laughlan-Deans Trophy – Most Points in Section 31

Class	2019 Trophy Winner – I Mayes	Prize		
31.1	Your own COMPOST in an ice cream container	£1	60p	40p
31.2	An BUG HOTEL made from recycled material	£1	60p	40p
31.3	SOMETHING NEW from SOMETHING OLD	£1	60p	40p
31.4	An BEACH BAG made from recycled materials	£1	60p	40p
31.5	A SINGLE SMALL SUNFLOWER in a recycled container	£1	60p	40p



KINGDOMINSURANCE

Where We Care About Your Cover



BOAT



CAR



FLEET



HOME



LIABILITY



OFFICE



LANDLORD



SHOP



TAXI



TRAVEL



CARAVAN



MOTOR TRADE



PRIVATE
MEDICAL



PROFESSIONAL
INDEMNITY



TRADESMAN



01383 413 377

25 Hope Street, Inverkeithing, KY11 1LN
Tel: 01383 413 377 - broker@kingdominsurance.co.uk

www.kingdominsurance.co.uk



SECTION 32 – JUST FOR FUN

Sponsored by Robson Forth Ltd

(www.robsonforth.co.uk)

**The Pat and Pat Bacon Fun Cup – Most Points in Section 32
2019 Trophy Winner – G & W Bennet**

Class		Prize		
32.1	Heaviest MARROW	£1	60p	40p
32.2	Longest RUNNER BEAN	£1	60p	40p
32.3	Heaviest ONION	£1	60p	40p
32.4	Longest CUCUMBER	£1	60p	40p
32.5	Most Misshapen POTATO	£1	60p	40p
32.6	Smallest Ripe TOMATO	£1	60p	40p
32.7	Most TOMATOES on a SINGLE TRUSS	£1	60p	40p
32.8	Most PEAS in a POD	£1	60p	40p

SECTION 33 – YOUNG GARDENERS

Sponsored by Kingdom Insurance

(www.kingdominsurance.co.uk)

**DBHS Young Gardeners Cup – Most Points in Section 33
Trophy presented by representatives of the Gala Royal Party
£10 Voucher donated by Gala Committee
2019 Trophy Winner – E Henderson**

Class		Prize		
33.1	An ANIMAL made from FRUIT and/or VEGETABLES	£1	60p	40p
33.2	A HOUSEPLANT grown in a DECORATED PLANT POT	£1	60p	40p
33.3	An item of ORIGAMI	£1	60p	40p
33.4	A MINIATURE GARDEN in a seed tray using natural materials only	£1	60p	40p
33.5	LARGEST SUNFLOWER HEAD cut from your own plant	£1	60p	40p
33.6	SMALLEST SUNFLOWER HEAD cut from your own plant	£1	60p	40p
33.7	3 DECORATED GINGER BISCUITS	£1	60p	40p

NB: There is no charge for exhibiting entries in SECTION 33.

MELVILLE

Plumbing & Heating

bathrooms - boilers - central heating - domestic plumbing

Graeme Melville

T: 01383 823 668

M: 0779 111 9973



*free estimates - no call out charges
all work guaranteed - installation services & repair*



PRINTING SERVICES (FIFE) LTD

11 Broomhead Drive • Dunfermline • KY12 9DT

Tel: 01383 620919

Email: info@printingservicesfife.com

SECTION 34 – YOUNG PHOTOGRAPHERS

Sponsored by Rebecca Lee Photography

(www.rebeccaleephoto.com)

The DBHS Young Photographers Cup – Most Points in
Section 34



Trophy presented by representatives of the Gala Royal Party
£10 Voucher donated by Gala Committee
2019 Trophy Winner – E Henderson

Class		Prize
34.1	1 Mounted PHOTOGRAPH entitled “BIG AND SMALL”	£1 60p 40p
34.2	1 Mounted PHOTOGRAPH of a FLOWER, PLANT or TREE	£1 60p 40p
34.3	1 Mounted PHOTOGRAPH entitled “ALL YOU NEED IS LOVE”	£1 60p 40p
34.4	1 Mounted PHOTOGRAPH entitled “MY BIG DREAM”	£1 60p 40p
34.5	1 Mounted BLACK AND WHITE Study entitled “WEATHER”	£1 60p 40p

**NB: The maximum size of entries to Section 34 will be restricted to
300mm X 250mm or 12” x 10”, including the mount.**

Subjects for Section 34 chosen by Sponsor.

NB: There is no charge for exhibiting entries in SECTION 34.

SECTION 35 – LOCAL GROUPS

Sponsored by Printing Services (Scotland) Ltd.

Printers to Dalgety Bay Horticultural Society (DBHS)

(www.printingservicesScotland.com)

The PJG Trowel Trophy – Most Points in Section 35

2019 Trophy Winner – Dalgety Bay Rainbows

Class		Prize
35.1	A figure made from recycled FLOWER POTS	£20 £15 £10

**NB: Exhibitors should write their group name and age range on the back
of the exhibitor card provided.**

NB: There is no charge for exhibiting entries in SECTION 35.



bruceshaw
building surveyors

"As Chartered Surveyors we have undergone years of training and have a lifetime of experience. We use thermographic cameras, endoscopes and moisture meters to help us assess and correctly identify solutions to your problems."

Your local Property Doctors:

Whether you are buying, selling or simply repairing your property, we provide a full range of survey & investigative services that can help you make the right decision:

Tel: 01383 824450

Mob: 07900 913975

or visit www.bruce-shaw.co.uk

Full range of survey related services

Rot
Leak Detection
Dampness
Windows
Roofs
Cracking
Conservatories
Listed Buildings
Boundary disputes



RICS



ICS



SECTION 36 – SCHOOLS

Open to Dalgety Bay and Donibristle Primary Schools only
Sponsored by Dalgety Bay and Hillend Community Council
The Community Council Schools Cup – Most Points in Section 36
2019 Trophy Winner – Donibristle Primary School

Class		Prize
36.1	Design the POSTER for this year's Annual Show	£1 60p 40p
36.2	A HAND WRITTEN POEM on an A4 sheet of paper, the border of which to be decorated (poem supplied to P2 only)	£1 60p 40p
36.3	TALLEST SUNFLOWER (pack supplied)	£1 60p 40p
36.4	TATTIE BARREL (Nursery Classes Only)	£1 60p 40p

NB: Pupils entering must write their name, school and primary class on the back of their entries.

SECTION 37 – ALLOTMENTS

Sponsored by Bruce Shaw Property Consultants Ltd
(www.bruce-shaw.co.uk)
The DBHS Allotments Cup – Most Points in Section 37
2019 Trophy Winner – R & M Pearson

Class		Prize
37.1	BEST ALLOTMENTS	£5 £3 £2

NB: Judging takes place and points are accumulated for content, variety and general tidiness as well as evidence of recycling. The winner is the holder of the plot with the most points.

NB: There is no charge for exhibiting entries in SECTION 37.

SECTION 38 – BLOOMING LOVELY

Sponsored by Blooming Lovely Dalgety Bay
(www.bloominglovely.org.uk)
Crosbie Matthew Trophy – Most Points in Section 38
2019 Trophy Winner – T Nelson

Class		Prize
38.1	Display of 3 VASES of CUT FLOWERS, using the vases provided. Each individual vase to have 1 KIND of FLOWER and may have a SINGLE CULTIVAR or MIXED CULTIVARS in it.	£5 £3 £2

Over 50 Doors on Display at Our Purpose Built Showroom

Express Garage Doors

FITTING GARAGE DOORS THROUGHOUT CENTRAL SCOTLAND

• Free Door Site Surveys • Cost Effective Solutions



- Manual & Automatic Garage Doors
- All Makes & Sizes of Garage Doors
- Remote Control Systems
- Made to Measure Doors Available
- Supply & Fit or Supply Only
- Garage Door Repairs
- Door Spares

Areas Covered Include:

- Dalgety Bay • Kirkcaldy
- Glenrothes • Kinross
- Dunfermline • Leven

FAMILY BUSINESS SINCE 1993



HÖRMANN
Garage and Industrial Doors

CARDALE
GARAGE DOORS

DHF
Door & Hardware
Federation



GLIDEROL
GARAGE DOORS
GARADOR

novoferm

Tel: 01383 852753

www.expressgaragedoors.co.uk

Showroom - Unit 7, Oakley Ind Est, Carnock Road, Oakley, Fife, KY12 9QB

SECTION 39 – DBHS TOP TRAY

Sponsored by Muir Homes Ltd
(www.muirhomes.co.uk)
The A & M Sherry DBHS Top Tray –
Most Points in Section 39
2019 Trophy Winner – S & S Sheail



Class

39.1 DBHS TOP TRAY (See Rules Below)

Prize

£5 £3 £2

DBHS TOP TRAY

Competition Rules

1. The DBHS Top Tray Section is for a collection of three types of vegetable from the following list of eight. The quantity of each vegetable required is given in brackets, carrots (3), cauliflowers (2), onions (3), parsnips (3), peas (6 pods), potatoes (3), runner beans (6 pods) and tomatoes (6). Each type of vegetable will be judged out of a total of 20 points. This is split into three sections as follows: 7 points for size, shape and colour; 7 points for condition; 6 points for uniformity. The overall mark will therefore be out of a total of 60 points.
2. All vegetables are to be displayed for effect. The vegetables must be displayed within an area of 18" x 24" (45cm x 60cm), without bending any part of them. No part of any exhibit may exceed the size of the tray. A tray, or board, which is 18" x 24" (45cm x 60cm), can be used to display the vegetables, or the area can simply be marked on the staging. Where a tray has an edge, it is the internal measurements that are taken. A black cloth is permitted and the tray may be painted.
3. Parsley is allowed for garnishing, but no other foliage or accessories, such as plates, sand, rings and so on will be permitted. Onion tops may be tied or whipped using raffia or string.

Notes for Exhibitors and Judges:

- Carrots and parsnips must have foliage trimmed to 3" (7.5cm).
- Peas and beans must be displayed with some stalk attached.
- Tomatoes must be displayed with calyxes.
- Judges may handle exhibits, open pods and so on, to check for quality.
- The tray, board or staging must not be cut or mutilated in any way at all, such as cutting holes for standing onions in.
- Judges should use their discretion when judging this Section remembering that entries may come from inexperienced exhibitors.
- The points awarded should be marked on the exhibitor cards.

TAYLOR

JOINERY SERVICES

Est. 1997

Ltd.

Philip Taylor - Dalgety Bay

Extensions

Fitted Kitchens

upvc Windows & Doors

Internal Doors

upvc Roofline & Fascia

Laminate Flooring

Stair Cases

Garage Conversions

External Doors

Fitted Bedrooms

Timber Decking

Facings and Skirtings

Renovations

Bathrooms



**Check out our work
on 08707 384 858**

ALL TRADES SUPPLIED

*All Types of Home Improvements
including Insurance Work*

Tel: 01383 822445 - Mobile: 07721 566 392
www.taylorjoineryservices.co.uk

SECTION 40 – DBHS TOP VASE

Sponsored by Muir Homes Ltd
(www.muirhomes.co.uk)
The A & M Sherry DBHS Top Vase –
Most Points in Section 40
2019 Trophy Winner – D & D Baty



Class

40.1 DBHS TOP VASE (See Rules Below)

Prize

£5 £3 £2

DBHS TOP VASE

Competition Rules

1. The DBHS Top Vase Section is for a vase of between 5 and 10 mixed flowering stems taken from a minimum of two different kinds of plants. Note that it is two different kinds of plants.
2. The display will be judged out of a total of 35 points, 25 points for colour, form, condition, quality and freshness and 10 points for overall presentation and effect of flowers in the vase. The vase will be viewed from all directions. Judging will be to normal RHS Rules.
3. The vase can be any shape and size and of any material, but must be in proportion to the display. There are no points for the vase.
4. No accessories, such as bows and additional foliage will be allowed. Foliage, which is growing naturally from the flowering stem, and is still attached to that stem, is allowed. Packing material, including oasis to keep stems in place, is also allowed.

Notes for Exhibitors and Judges:

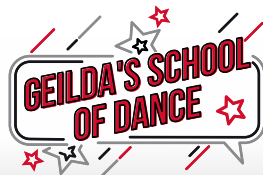
- Flowering stems may be taken from any flowering plant.
- The different kinds of plant are to be taken from different genera. Pinks, carnations and sweet william are Dianthus and not different.
- Only fresh, home grown flowers can be used in the vase.
- A vase, by definition, is any vessel that can be used to hold cut flowers and which is taller than it is wide at its widest point.
- Judges should use their discretion when judging this Section remembering that entries may come from inexperienced exhibitors.
- Note that the vase is to be viewed from all directions.
- The points awarded should be marked on the exhibitor cards.

Now enrolling - beginners welcome!

Learn to Dance!

Latin American, Ballroom, Disco,
Rock n Roll & Salsa classes available

Dalgety Bay



LIVE • LOVE • DANCE



**Beginners and advanced classes are available
for adults, ladies only, and children aged 3+**



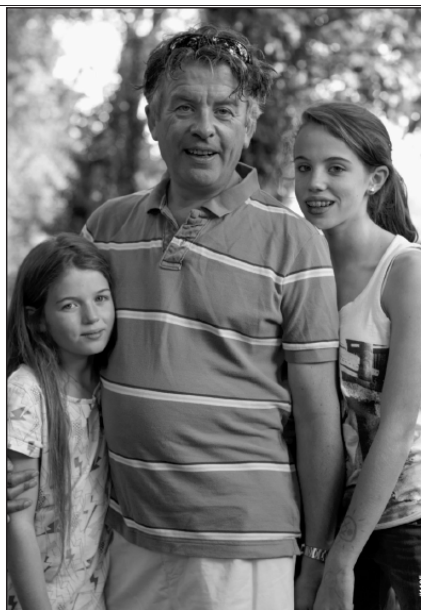
For info on levels / classes please contact;

Geilda Brown MSDTA : 07867 808352

Email: geildasschoolofdance@gmail.com



Geilda's School of Dance has over 35 years experience teaching children from age 3 up to adults, providing progression through exams, from beginner to professional levels with the SDTA. All teachers are qualified through SDTA, fully insured, PVG registered and First Aid Trained.



400,000 men in the UK are living with and after Prostate Cancer

Prostate Cancer UK is there to help everyone affected by the disease. We fund research, provide support and information, and campaign to improve the lives of men with prostate cancer.

Help us fight prostate cancer on every front.

Confidential helpline

0800 074 8383

Mon-Fri: 9 am to 6 pm

Weds: 10 am to 8 pm

www.prostatecanceruk.org

Lockfast

Your Local & Professional Mobile Locksmith

Tel: 0777 366 4420

Alan Burt

*Providing a fast, friendly, reliable service,
for all your domestic and commercial lock requirements*

- | | |
|---|--|
| <input checked="" type="checkbox"/> 24 Hour Service | <input checked="" type="checkbox"/> Free Security Check & Advice |
| <input checked="" type="checkbox"/> 1 Hour Emergency Response | <input checked="" type="checkbox"/> Fixed Prices |
| <input checked="" type="checkbox"/> Free Callout & Estimates | <input checked="" type="checkbox"/> Locks Fitted to British Standard BS 3621 |
| <input checked="" type="checkbox"/> UPVC Lock Specialist | <input checked="" type="checkbox"/> Insurance Approved |



- | | |
|--|--|
| <ul style="list-style-type: none">* Non destructive entry* UPVC Door and Window locks* Digital locks* Insurance approved* We accept all major credit cards | <ul style="list-style-type: none">* Cylinder & mortice locks fitted to British Standard BS 3621* Fixed Prices* Keys cut & tested on site* Safes, key boxes supplied and fitted* Vehicle keys supplied and programmed |
|--|--|

Please send enquiries to:



enquiries@lockfast.biz
www.lockfast.biz



Exhibition Rules

1. Produce entered for the competition must have been grown by the exhibitor for at least two months.
2. Vegetable entries must be ready for display before being brought to the show. Competitors are responsible for staging their own exhibits and beginners will be given assistance, if required.
3. The same exhibit must not be entered in more than one class. No more than one entry per household can be made in one class.
4. Sections 1 to 4 are for DBHS members only. Section 30 and Class 20.9 are for Novices only. All other sections are open.
5. Pot plants to be shown in the pots in which they were grown.
6. Plates, vases or alternatives will be supplied. No other plates or vases will be permitted unless stated in the schedule.
7. Any condition specified in a class must be adhered to.
8. All exhibits must be properly named, so far as known, to be entitled to full marks.
9. The decision of the judges is final. They shall have the power to give an award if an exhibit merits a prize or withhold any award if entries are poor in quality.
10. All trophies are the property of DBHS and cannot be won outright, except for the trophy awarded as Sponsor's Choice.
11. **The hall will be open to receive exhibits from 7:00pm to 9:30pm on Friday evening and 8:00am to 9:45am on Saturday morning. The halls must be cleared for judging by 10:00am.**
12. No exhibit may be removed from the halls until after the prize giving, without permission of the Show Management.
13. DBHS will not be responsible for the loss or damage to exhibits arising from any cause whatsoever, but all care will be taken.
14. Any exhibit not uplifted by 5pm may be disposed of.
15. Vegetable judging will be in accordance with the NVS handbook.
16. Other judging will be in accordance with the RHS show handbook.
17. Any protest must be made in writing and delivered to the Show Management before 3:00pm.
18. Prize money must be collected by 5:00pm on the day of the show. Prize money left after that time will revert to DBHS funds.
19. The Show Management reserves the right to visit the garden of any competitor from two weeks before to two weeks after the show.
20. The Show Management reserve the right to move exhibits as and when necessary.
21. To qualify to exhibit in any of the DBHS Members Only Sections, the exhibitor must have been a member of DBHS for at least two months prior to the show.

Hints for Exhibiting

The Schedule:

An exhibitor should read the schedule very carefully, including all the rules. If in doubt, contact the Show Management. It is very important to read what is asked for in exhibiting, not what you think is asked for.

Dates and Times:

All dates and times should be noted, particularly the first and last dates for receipt of entries, times for staging and times for removal of exhibits from the hall.

Allow Ample Time for Staging:

A last minute rush should be avoided as this is when mistakes can happen, like putting too many specimens in a vase, which results in the disqualification NAS – Not According to Schedule.

Labels and Entry Cards:

Labels with names of the cultivars should be shown wherever possible. On arrival at the place of exhibition you should immediately procure entry cards from the Show Office. These should have your name and class number clearly shown and will be placed, face down, next to your exhibit with the class number and any cultivar name shown on the back of the card.

Uniformity:

There should be uniformity in any exhibit and especially in the fruit and vegetable sections.

Absence During Judging: All exhibitors should leave the exhibition halls at the stated time without delay before judging commences and not return until the fixed time for re-admission.

Be a Sportsman: The decision of the judges should be accepted with good grace. An exhibitor, who has failed to get a prize and cannot see why, should search calmly and patiently for the cause of the competitors' success in order to achieve better results next time.

Preparation and Presentation: All exhibits should be staged in accordance with the rules and schedule, and as attractively as possible. In close competition, points for arrangement may be the deciding factor and a judge cannot fail to be favourably influenced by good presentation. Always take a few extra specimens to the show in case of accident. Remove any damaged flowers together with discoloured or broken leaves. Make sure the length of the stalk retained is appropriate for the size of the vase to be used.

Encouragement: We need exhibitors to make the show. How many times have you said "I have better than that at home?" So bring it along even though you have not exhibited before. We will be only too happy to help and advise you.



BAY GARDENS

**Dalgety Bay
A Local Business**

- **lawn cutting • lawncare • turfing**
- **hedge trimming & shaping**
- **tree cutting • stumping**
- **pruning • fencing & decking**
- **monoblocking & slabbing**
- **general maintenance**

Maintaining the exterior of your property

- **gutter clearing, cleaning & emptying**
- **gutter repairing & replacing**

**National
Registered
Business**

Chris Coutts
07887 693605
baygardens@mail.com
baygardens 

**Public
Liability
Insurance**

Bathroom Centre FIFE

**We won't
be beaten
on price!!**



LOOKING FOR A NEW BATHROOM?

Various packages available!

Call us today for a free
no obligation survey.



Find us on:



tel: 01383 630520

www.bathroomcentrefife.co.uk

DBHS Annual Show Entry Form – 2022

1.1	1.2	1.3	1.4	1.5	1.6	1.7	1.8	1.9	1.10	1.11
1.12	1.13	2.1	2.2	2.3	2.4	2.5	2.6	2.7	2.8	2.9
2.10	2.11	2.12	2.13	3.1	3.2	3.3	3.4	3.5	3.6	3.7
3.8	3.9	3.10	3.11	4.1	4.2	4.3	4.4	4.5	4.6	4.7
4.8	4.9	4.10	4.11	5.1	5.2	5.3	5.4	5.5	5.6	5.7
5.8	5.9	5.10	5.11	5.12	5.13	5.14	5.15	5.16	5.17	5.18
5.19	5.20	5.21	5.22	5.23	5.24	5.25	5.26	5.27	5.28	5.29
5.30	5.31	5.32	5.33	5.34	6.1	6.2	6.3	6.4	6.5	6.6
7.1	7.2	7.3	7.4	7.5	8.1	8.2	8.3	8.4	8.5	8.6
8.7	8.8	8.9	8.10	8.11	8.12	8.13	9.1	9.2	9.3	9.4
9.5	9.6	10.1	10.2	10.3	10.4	10.5	10.6	11.1	11.2	11.3
11.4	11.5	11.6	12.1	12.2	12.3	12.4	12.5	12.6	12.7	12.8
12.9	12.10	12.11	12.12	12.13	12.14	12.15	13.1	13.2	13.3	13.4
13.5	14.1	14.2	14.3	14.4	14.5	14.6	15.1	15.2	15.3	15.4
15.5	15.6	15.7	15.8	15.9	15.10	16.1	16.2	16.3	16.4	16.5
16.6	16.7	17.1	17.2	17.3	17.4	18.1	18.2	18.3	18.4	18.5
18.6	18.7	18.8	19.1	19.2	19.3	19.4	19.5	19.6	19.7	19.8
19.9	20.1	20.2	20.3	20.4	20.5	20.6	20.7	20.8	20.9	21.1
22.1	22.2	22.3	22.4	22.5	22.6	22.7	23.1	23.2	23.3	23.4
23.5	23.6	23.7	23.8	23.9	24.1	24.2	24.3	24.4	24.5	24.6
24.7	24.8	25.1	25.2	25.3	25.4	25.5	25.6	25.7	25.8	25.9
25.10	26.1	26.2	26.3	26.4	26.5	26.6	26.7	26.8	27.1	27.2
27.3	27.4	27.5	27.6	27.7	27.8	28.1	28.2	28.3	28.4	28.5
29.1	29.2	29.3	29.4	30.1	30.2	30.3	30.4	30.5	30.6	30.7
30.8	31.1	31.2	31.3	31.4	31.5	32.1	32.2	32.3	32.4	32.5
32.6	32.7	32.8	33.1	33.2	33.3	33.4	33.5	33.6	33.7	34.1
34.2	34.3	34.4	34.5	35.1	36.1	36.2	36.3	36.4	37.1	38.1
39.1	40.1									

Name: **Tel No:**

Address:

.....

..... **Post Code:**

To enter, circle the box or boxes of the classes you are entering and return the form to the address below to register your entries. The entry fee of 20p per class will be waived if the entry form is received by the Wednesday before the show. There is no entry fee for any of the classes in Sections 33 to 37.

Entries may be posted to:
DBHS Chairman
89 Steeple Crescent
Dalgety Bay
Fife
KY11 9SZ

You can download the entry form
from website www.dbhs.org.uk

You can email your entry form to:
michaeljg@btintetnet.com

EST. 1939

CROSBIE MATTHEW

FUNERAL DIRECTORS



“family owned and run for over 80 years”
www.crosbiematthew.co.uk

- ◆ Upfront costs on our website
- ◆ Headstones on display
- ◆ Pre-paid funeral plans

FUNERAL PLANS FROM
Golden Charter
Smart Planning for Later Life



SCOTLAND
SAIF
INDEPENDENT
FUNERAL
DIRECTORS

Kirkcaldy 01592 640644 Glenrothes 01592 751997

24 Hours

Dalgaty Bay 01383 822121 Rosyth 01383 669333

“taking care of every detail”

DALGETY

Fish Bar



9 Moray Way North
Dalgety Bay
KY11 9NH
01383 821599

FISH AND CHIPS • PASTA • PIZZAS • KEBABS
BAKED POTATOES • BURGERS • OMELETTES • SALADS
OPEN 7 DAYS

Lunch	Monday - Friday	11:30am – 1:30pm
Evening	Monday – Thursday	4:00pm – 10:30pm
Evening	Friday – Saturday	4:00pm – 11:00pm
Evening	Sunday	4:00pm – 10:30pm

HOME DELIVERY SERVICE AVAILABLE

TEL: 01383 821599

and Upstairs

Pasticceria
Caffetteria



Ice Cream Parlour

Gelateria
Artigianale